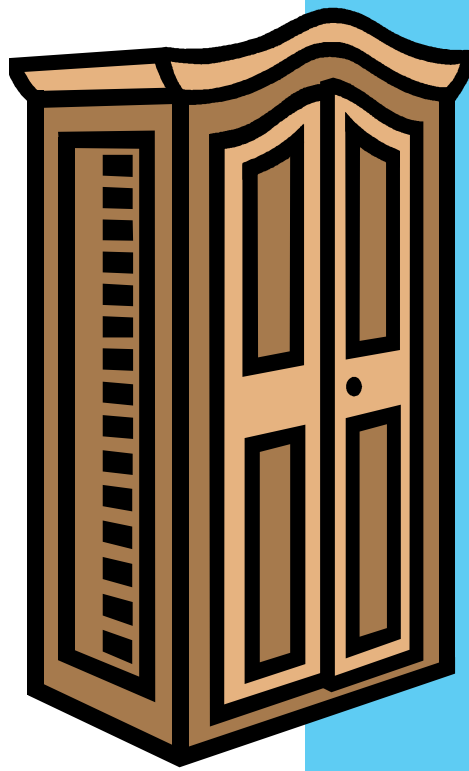


County Profiles: Manufacturing

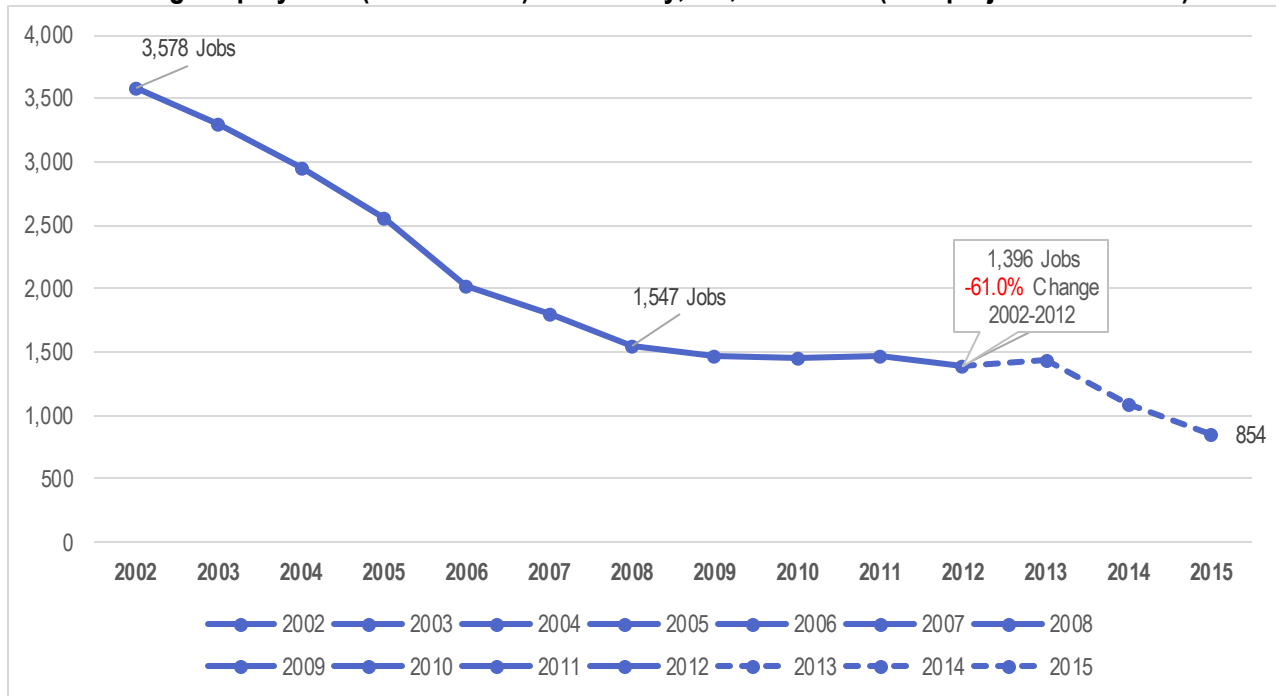


Galax City, Virginia

Supplemental Reference Materials
Supporting:
**New River/ Mount Rogers Skills Gap
Analysis**

*Prepared by:
Virginia Tech Office of Economic
Development*

Manufacturing Employment (NAICS 31-33): Galax City, VA, 2002-2012 (with projections to 2015)ⁱ



Manufacturing Employment (NAICS 31-33): Galax City vs. Neighboring Jurisdictions/Regionsⁱⁱ

	2002 Jobs	2008 Jobs	2012 Jobs	Change 2002-2012 (#)	Change 2002-2012 (%)
Galax City	3,578	1,547	1,396	(-2,182)	(-61.0%)
New River/Mount Rogers WIA 2	34,178	28,241	25,440	(-8,738)	(-25.6%)
BRCEDA	5,484	3,255	2,777	(-2,707)	(-49.4%)
Roanoke, VA MSA	19,196	16,719	14,758	(-4,438)	(-23.1%)
Kingsport-Bristol-Bristol, VA/TN (Minus WIA 2 Jurisdictions)	20,848	17,607	16,416	(-4,432)	(-21.3%)
Virginia	321,016	264,948	231,033	(-89,983)	(-28.0%)
United States	15,209,748	13,382,696	11,905,319	3,304,429	(-21.7%)

Manufacturing Employment: Galax City, VA, by NAICS 3-Digit Industryⁱⁱⁱ*LQ>1 = Above National Average Concentration of Employment*

NAICS Code	Description	2008 Jobs	2009 Jobs	2010 Jobs	2011 Jobs	2012 Jobs	Change 2008-2012	2012 National Location Quotient
337	Furniture and Related Product Manufacturing	740	722	697	699	725	(-15)	44.82
321	Wood Product Manufacturing	197	222	281	297	255	58	16.48
327	Nonmetallic Mineral Product Manufacturing	354	294	257	250	222	(-132)	13.25
315	Apparel Manufacturing	237	210	174	158	149	(-88)	21.96
334	Computer and Electronic Product Manufacturing	<10	<10	12	19	26	--	0.51
332	Fabricated Metal Product Manufacturing	<10	17	22	31	12	--	0.18
323	Printing and Related Support Activities	<10	<10	<10	<10	<10	--	--
311	Food Manufacturing	<10	<10	<10	<10	0	--	0.00
331	Primary Metal Manufacturing	0	<10	<10	<10	0	0	0.00
333	Machinery Manufacturing	<10	0	0	0	0	--	0.00
Total		1,547	1,474	1,456	1,469	1,396	(-151)	--

Manufacturing Earnings, by NAICS 3-Digit Industry: Galax City, VA^{iv}

NAICS Code	Description	2013 Average Earnings Per Job (Galax City)	2013 Average Earnings Per Job (New River/Mount Rogers WIA)	2013 Average Earnings Per Job (BRCEDA)	2013 Average Earnings Per Job (Virginia)	2013 Average Earnings Per Job (United States)
337	Furniture and Related Product Manufacturing	\$38,223	\$37,127	\$38,148	\$43,443	\$49,025
321	Wood Product Manufacturing	\$33,310	\$36,199	\$32,498	\$45,046	\$48,510
327	Nonmetallic Mineral Product Manufacturing	\$34,720	\$49,709	\$34,525	\$55,363	\$64,593
315	Apparel Manufacturing	\$25,097	\$26,538	\$25,131	\$33,649	\$45,352
334	Computer and Electronic Product Manufacturing	\$66,357	\$67,258	\$61,281	\$105,679	\$119,790
332	Fabricated Metal Product Manufacturing	\$46,044	\$53,921	\$41,959	\$66,359	\$63,732
323	Printing and Related Support Activities	\$38,480	\$48,507	\$31,800	\$51,949	\$55,221
Total		\$35,865	\$44,368	\$37,589	\$62,035	\$74,265

Manufacturing Age Demographics (2013 Estimates), by NAICS 3-Digit Industry: Galax City, VA^v

NAICS Code	Description	Age 14-18	Age 19-21	Age 22-24	Age 25-34	Age 35-44	Age 45-54	Age 55-64	Age 65-99
337	Furniture and Related Product Manufacturing	<10	13	19	88	183	237	161	37
321	Wood Product Manufacturing	<10	<10	12	39	54	74	46	26
327	Nonmetallic Mineral Product Manufacturing	<10	18	<10	22	71	71	36	<10
315	Apparel Manufacturing	<10	<10	<10	17	39	39	37	13
334	Computer and Electronic Product Manufacturing	0	0	0	<10	<10	<10	<10	<10
332	Fabricated Metal Product Manufacturing	0	0	<10	<10	<10	<10	<10	0
323	Printing and Related Support Activities	0	0	0	0	0	<10	<10	0
311	Food Manufacturing	0	0	0	0	0	0	0	0
331	Primary Metal Manufacturing	0	0	0	0	0	0	0	0
333	Machinery Manufacturing	0	0	0	0	0	0	0	0
Total		12	44	47	177	358	430	293	81

Staffing Patterns for Manufacturing Employers: Galax City, Virginia (SOC: 2-Digit)^{vi}

SOC	Occupation Group	2008 Jobs	2012 Jobs	Change Jobs 2008-2012 (#)	% of Total Jobs in Galax City Manufacturing	Median Hourly Earnings (All Industries)
51-0000	Production Occupations	1,011	923	(-88)	66.0%	\$11.40
43-0000	Office and Administrative Support Occupations	144	137	(-7)	9.8%	\$11.31
53-0000	Transportation and Material Moving Occupations	147	118	(-29)	8.5%	\$11.58
49-0000	Installation, Maintenance, and Repair Occupations	75	55	(-20)	4.0%	\$15.29
11-0000	Management Occupations	46	40	(-6)	2.9%	\$30.81
41-0000	Sales and Related Occupations	30	31	1	2.3%	\$10.98
47-0000	Construction and Extraction Occupations	29	30	1	2.2%	\$14.31
13-0000	Business and Financial Operations Occupations	19	19	0	1.4%	\$19.60
17-0000	Architecture and Engineering Occupations	18	17	(-1)	1.2%	\$32.26
37-0000	Building and Grounds Cleaning and Maintenance Occupations	<10	<10	--	0.6%	--
15-0000	Computer and Mathematical Occupations	<10	<10	--	0.5%	--
27-0000	Arts, Design, Entertainment, Sports, and Media Occupations	<10	<10	--	0.4%	--
45-0000	Farming, Fishing, and Forestry Occupations	<10	<10	--	0.1%	--
33-0000	Protective Service Occupations	<10	<10	--	0.1%	--
29-0000	Healthcare Practitioners and Technical Occupations	<10	<10	--	0.1%	--
Total		1,547	1,396	(-151)	100.0%	--

Top Ten Production Occupations for Manufacturing: Galax City, VA (SOC: 5-Digit)^{vii}

	SOC	Description	2008 Jobs	2012 Jobs	Change Jobs 2008-2012 (#)	% of Total Jobs in Galax City Manufacturing	Median Hourly Earnings (All Industries)
1.	51-7042	Woodworking Machine Setters, Operators, and Tenders, Except Sawing	123	161	38	11.5%	\$10.21
2.	51-6031	Sewing Machine Operators	87	105	18	7.5%	\$8.24
3.	51-7011	Cabinetmakers and Bench Carpenters	83	90	7	6.4%	\$10.37
4.	51-2092	Team Assemblers	90	72	(-18)	5.2%	\$9.81
5.	51-1011	First-Line Supervisors of Production and Operating Workers	72	68	(-4)	4.9%	\$20.20
6.	51-7041	Sawing Machine Setters, Operators, and Tenders, Wood	37	49	12	3.5%	\$11.79
7.	51-9198	Helpers--Production Workers	51	48	(-3)	3.4%	\$8.53
8.	51-9061	Inspectors, Testers, Sorters, Samplers, and Weighers	42	32	(-10)	2.3%	\$11.45
9.	51-7021	Furniture Finishers	24	25	1	1.8%	\$8.87
10.	51-6093	Upholsterers	41	22	(-19)	1.6%	\$12.55
Other Titles with Employment <0: Assemblers and Fabricators (All Other); Textile Knitting and Weaving Machine Setters, Operators, and Tenders; Production Workers (All Other); Cutting and Slicing Machine Setters, Operators, and Tenders; Furnace, Kiln, Oven, Drier, and Kettle Operators and Tenders; Extruding, Forming, Pressing, and Compacting Machine Setters, Operators, and Tenders; Welders, Cutters, Solderers, and Brazers; Packaging and Filling Machine Operators and Tenders; Machinists; Extruding and Forming Machine Setters, Operators, and Tenders, Synthetic and Glass Fibers; Molders, Shapers, and Casters (Except Metal and Plastic)							

Top Office and Administrative Support Occupations for Manufacturing: Galax City, VA (SOC: 5-Digit)^{viii}

	SOC	Description	2008 Jobs	2012 Jobs	Change Jobs 2008-2012 (#)	% of Total Jobs in Galax City Manufacturing	Median Hourly Earnings (All Industries)
1.	43-5071	Shipping, Receiving, and Traffic Clerks	30	27	(-3)	1.9%	\$9.26
2.	43-9061	Office Clerks, General	25	27	2	1.9%	\$10.24
3.	43-4051	Customer Service Representatives	17	17	0	1.2%	\$9.81
4.	43-3031	Bookkeeping, Accounting, and Auditing Clerks	14	15	1	1.1%	\$12.55
5.	43-5081	Stock Clerks and Order Fillers	13	13	0	0.9%	\$8.59
Other Titles (Each with <10 Employees): First-Line Supervisors of Office and Administrative Support Workers; Production, Planning, and Expediting Clerks; Secretaries and Administrative Assistants, Except Legal, Medical, and Executive; Receptionists and Information Clerks; Order Clerks; Payroll and Timekeeping Clerks; Billing and Posting Clerks; Executive Secretaries and Executive Administrative Assistants; Human Resources Assistants, Except Payroll and Timekeeping; Procurement Clerks ; Office and Administrative Support Workers, All Other; Bill and Account Collectors; Switchboard Operators, Including Answering Service; Weighers, Measurers, Checkers, and Samplers, Recordkeeping; Data Entry Keyers; Computer Operators							

Top Transportation and Material Moving Occupations for Manufacturing: Galax City, VA (SOC: 5-Digit)^{ix}

	SOC	Description	2008 Jobs	2012 Jobs	Change Jobs 2008-2012 (#)	% of Total Jobs in Galax City Manufacturing	Median Hourly Earnings (All Industries)
1.	53-7064	Packers and Packagers, Hand	53	39	(-14)	2.8%	\$8.55
2.	53-7062	Laborers and Freight, Stock, and Material Movers (Hand)	39	29	(-10)	2.1%	\$9.37
3.	53-7051	Industrial Truck and Tractor Operators	20	18	(-2)	1.3%	\$12.13
Other Titles (Each with <10 Employees): Heavy and Tractor-Trailer Truck Drivers; Light Truck or Delivery Services Drivers; Machine Feeders and Offbearers; First-Line Supervisors of Helpers, Laborers, and Material Movers (Hand); First-Line Supervisors of Transportation and Material Moving Machine and Vehicle Operators; Crane and Tower Operators; Cleaners of Vehicles and Equipment; Conveyor Operators and Tenders; Material Moving Workers (All Other)							

Top Installation, Maintenance, and Repair Occupations for Manufacturing: Galax City, VA (SOC: 5-Digit)^x

	SOC	Description	2008 Jobs	2012 Jobs	Change Jobs 2008-2012 (#)	% of Total Jobs in Galax City Manufacturing	Median Hourly Earnings (All Industries)
1.	49-9071	Maintenance and Repair Workers, General	26	22	(-4)	1.6%	\$13.16
2.	49-9041	Industrial Machinery Mechanics	26	18	(-8)	1.3%	\$14.48
3.	49-9043	Maintenance Workers, Machinery	14	<10	--	0.5%	--
Other Titles (Each with <10 Employees): First-Line Supervisors of Mechanics, Installers, and Repairers; Helpers--Installation, Maintenance, and Repair Workers; Installation, Maintenance, and Repair Workers, All Other; Millwrights; Manufactured Building and Mobile Home Installers; Bus and Truck Mechanics and Diesel Engine Specialists; Refractory Materials Repairers, Except Brickmasons							

Top Management Occupations for Manufacturing: Galax City, VA (SOC: 5-Digit)^{xi}

	SOC	Description	2008 Jobs	2012 Jobs	Change Jobs 2008-2012 (#)	% of Total Jobs in Galax City Manufacturing	Median Hourly Earnings (All Industries)
1.	11-1021	General and Operations Managers	22	18	(-4)	1.3%	\$29.96
2.	11-3051	Industrial Production Managers	11	10	(-1)	0.7%	\$37.27
Other Titles (Each with <10 Employees): Chief Executives; Financial Managers; Sales Managers; Purchasing Managers; Architectural and Engineering Managers; Administrative Services Managers; Computer and Information Systems Managers; Marketing Managers; Transportation, Storage, and Distribution Managers; Managers, All Other; Human Resources Managers; Construction Managers							

References

- ⁱ Source: EmsiAnalyst. Version 2013.4 Class of Worker. QCEW Employment only. (QCEW: 2013 Q1)
- ⁱⁱ Source: EmsiAnalyst. Version 2013.4 Class of Worker. QCEW Employment only. (QCEW: 2013 Q1)
- ⁱⁱⁱ Source: EmsiAnalyst. Version 2013.4 Class of Worker. QCEW Employment only. (QCEW: 2013 Q1)
- ^{iv} Source: EmsiAnalyst. Version 2013.4 Class of Worker. QCEW Employment only. (QCEW: 2013 Q1)
- ^v Source: EmsiAnalyst. Version 2013.4 Class of Worker. QCEW Employment only. (QCEW: 2013 Q1)
- ^{vi} Source: EmsiAnalyst. Version 2013.4 Class of Worker. QCEW Employment only. (QCEW: 2013 Q1)
- ^{vii} Source: EmsiAnalyst. Version 2013.4 Class of Worker. QCEW Employment only. (QCEW: 2013 Q1)
- ^{viii} Source: EmsiAnalyst. Version 2013.4 Class of Worker. QCEW Employment only. (QCEW: 2013 Q1)
- ^{ix} Source: EmsiAnalyst. Version 2013.4 Class of Worker. QCEW Employment only. (QCEW: 2013 Q1)
- ^x Source: EmsiAnalyst. Version 2013.4 Class of Worker. QCEW Employment only. (QCEW: 2013 Q1)
- ^{xi} Source: EmsiAnalyst. Version 2013.4 Class of Worker. QCEW Employment only. (QCEW: 2013 Q1)